



CONTENTS

CLADDING	3
PANELS	13
TOPS, TREADS & BASES	21
INSPIRED FABRICATIONS	29
PHOTO INDEX	36

Since 1997 we have been making beautiful, sustainably sourced products for our customers' projects.

Windfall's products are found across North America in Education, Hospitality, Office, and Multi-family interiors.

We offer customization of our standard products and work with you to bring your inspired fabrications to life. Just ask us.

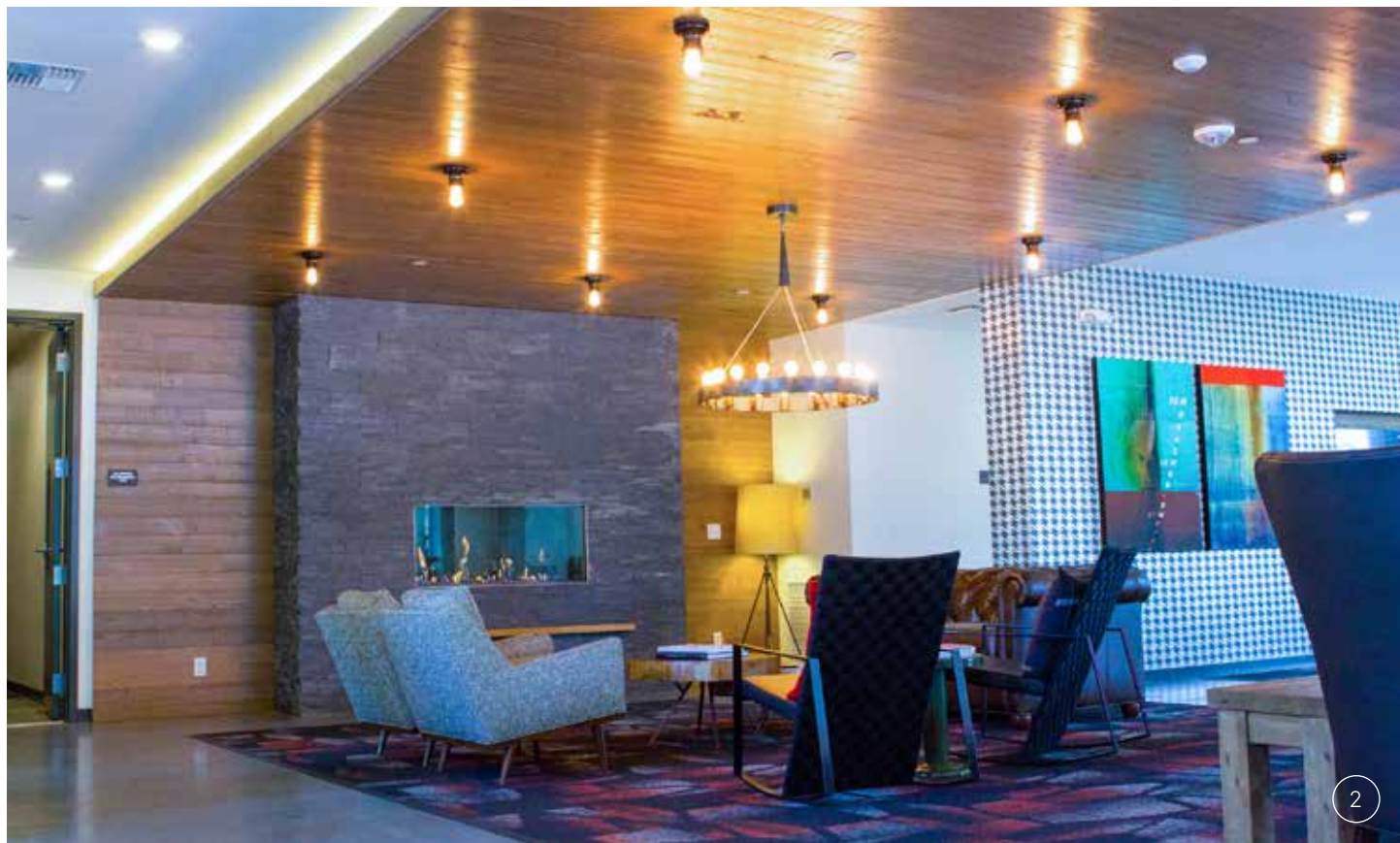
We have reps in many states in the U.S. and a great crew at our factory who are at your service.

Warm regards,

The Windfall Architectural
Products Team

ABOUT US







CLADDING



We have you covered.

Windfall cladding is for walls, ceilings, bar fronts, reception areas, and fixtures of all kinds. Whether refined or rustic, wood adds warmth and visual interest to a space.





NATURAL WARMTH



We use beams from deconstructed commercial buildings to make our reclaimed Douglas Fir products. These products carry a FSC-Recycled certification. Reclaimed interior wood is dependable and consistent and makes durable and long-lasting products.





Our Tributary, Olympia and Cascades cladding lines are made from FSC certified Red Alder grown in the Pacific NW. Our Tropics Cladding and African Hardwood Blend Tops are made from reclaimed shipping dunnage. Other materials include regionally salvaged Telephone Pole, Western Maple, and Claro Walnut.







16



17





19



20

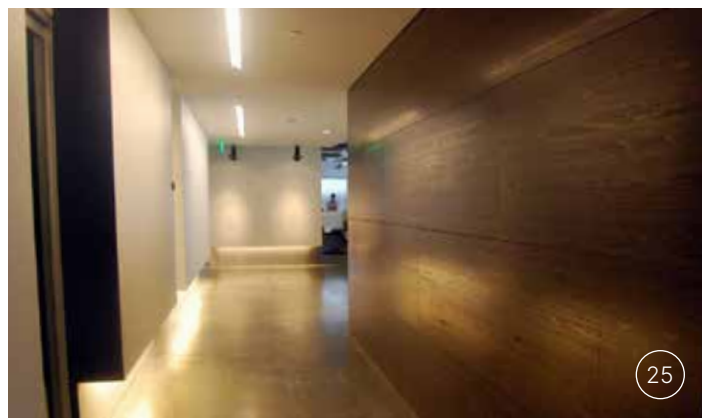
Ode to panels

Ingredients for your
imagination.

Panels cover all manner
of faces, partition spaces,
become platforms and
signage with engraving or
printing.

Panelize cladding for
faster installation.





OFFICE ART



16

26



27

Windfall's Engineered Panels are made from reclaimed Douglas Fir, and can add character to a surprising number of design elements.

Panels come in rigid $\frac{3}{4}$ " or flexible $\frac{1}{4}$ " thickness, smooth and textured faces, a variety of sizes, and a full selection of colors. How can our Engineered Panels fit into your next design?





We work with local partners who can print, paint, or engrave on panels. Your custom materials can arrive to the project site ready for installation.



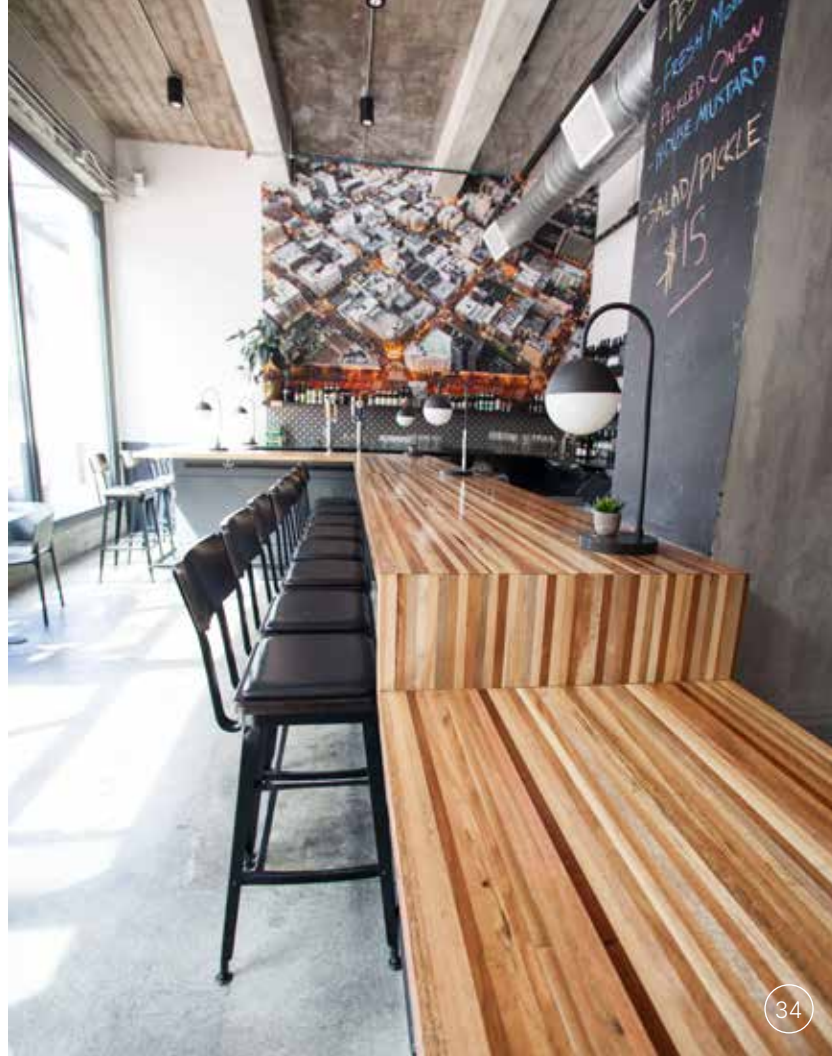


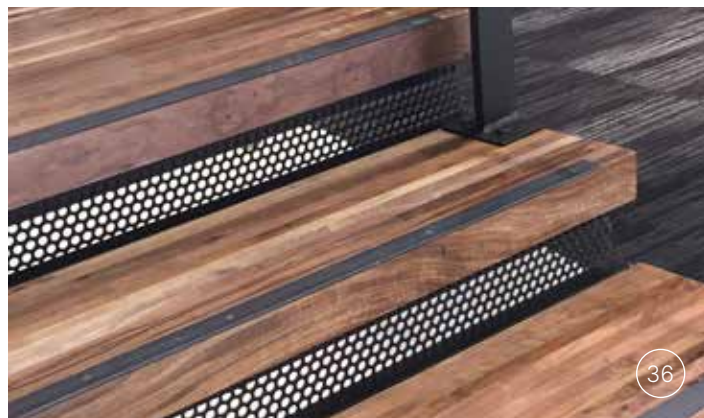


TOPS, TREADS & BASES



Our hand-crafted tops and treads are made to order and are available in several wood species and construction types. Tops can be paired with our line of commercial bases offered in six standard finishes.





BOLD DESIGN



Do you have a table design in mind? We have skilled staff who excel at bringing inspiration to reality. Share your concept with us and then together we can review and design the top and/or metalwork that makes your project shine!

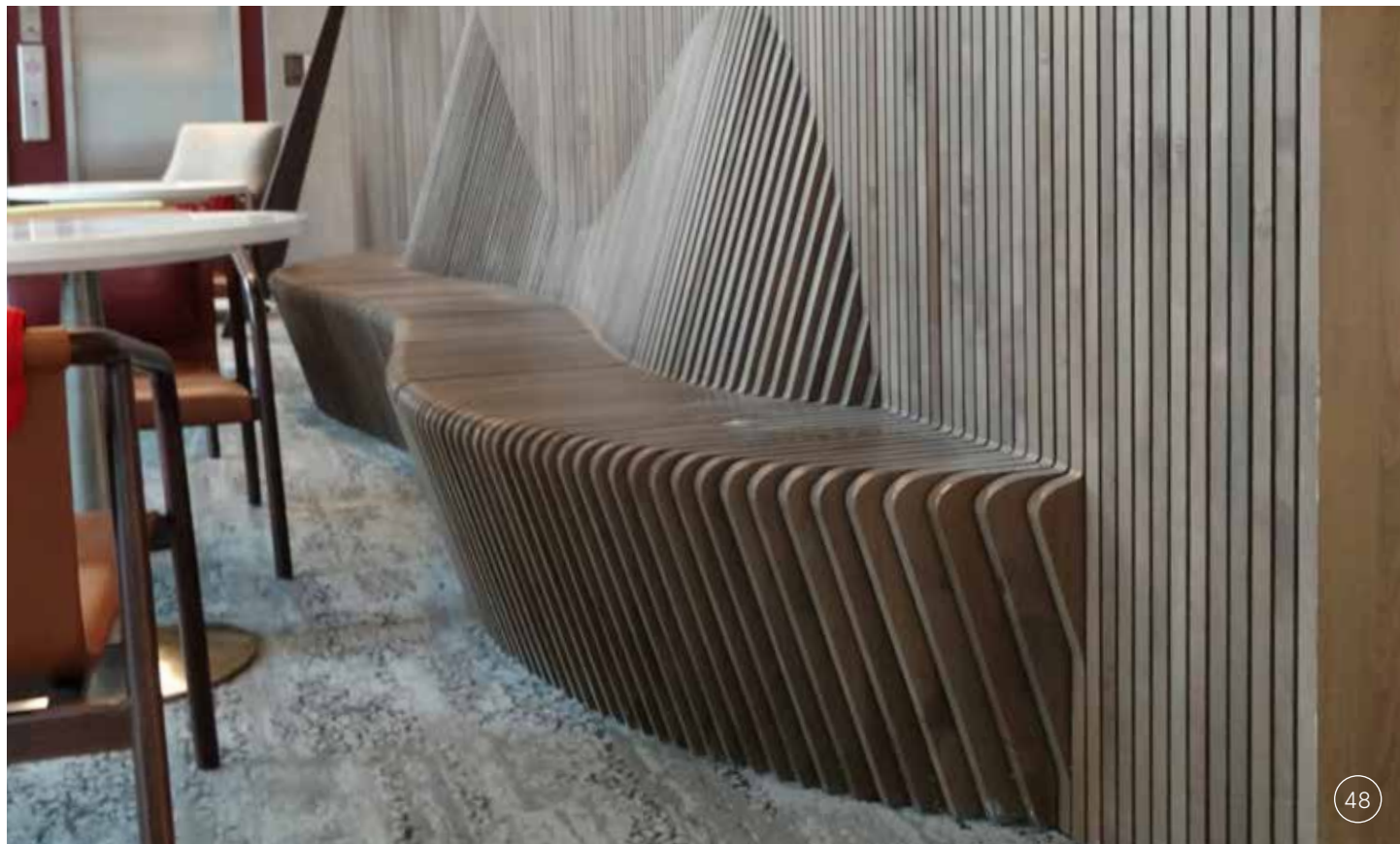
















Distinctive Ceilings

Cladding on a ceiling creates a cozy, intimate area. Apply remarkable elements and people remember the unique style of your space.







53

Image Credit © Adam Hunter/LMN Architects



54

PHOTOS INDEX

Front Cover: VM Ware, ¾" Engineered Panels as reception wall and ceiling fins, VDTA.

1. Olympia Coffee, Western Maple table and bar tops, Artisans Group.
2. The Spencer 68 Apts., Portland Cladding - Cascadian Brown, wall and ceiling, GGLO.
3. 3001 Division Elevator Shaft, Tributary Cladding - Hamma Hamma, Studio WTA.
4. Olathe W. High School, Portland and Color Cladding - Steel, Evening & Cascadian Brown, Hollis & Miller Architects.
5. D2 logo engraved on Portland Cladding - Anthracite.
6. Olathe W. High School, Portland and Color Cladding - Steel, Evening & Cascadian Brown, Hollis & Miller Architects.
7. KPG Architects Office, Multi-level Wall - Warm Brown & Clear, KPG Architects.
8. Amazon Lobby, Sabi Cladding - Char, Interior Architects.
9. PCC Market HQ, Panelized Multi-level Wall - Textured - Leather.
10. Embers Entertainment, Sabi Weather Cladding, Christine Chaney Creative & mYamaguchi.
11. Poly Clinic, Multi-level Wall in Eastern Maple, Mithun.
12. Dos Hermanos Restaurant, Western Maple Cladding - Dusk, Artisans Group.
13. Lizzy Kate Tea Shop, Western Maple Cladding, Live Edge Bar Top, and tables, Weber Thompson.
14. Puget Vista Apts., Olympia Cladding - Sage, CLO Design.
15. Olympia Coffee, Olympia Cladding - Bone, Artisans Group.
16. Amazon Lobby, Sabi Shoji w/ metal corner trim, Interior Archibts.
17. Amazon Lobby, Sabi Shoji and Char, Interior Architects.
18. McCain Foods HQ, ¾" Engineered Panel applied as treads - Clear, Whitney Architects.
19. Green Lake Village, ¾" Engineered Panels - Anthracite, Sechrist Design.
20. Indigo Urgent Care, Engineered Panels, Custom Stain with painted graphics, BCRA Design.
21. Starbucks at Macy's San Francisco, Custom Walnut panels.
22. Indigo Urgent Care, Engineered Panels, Custom Stain and engraving, BCRA Design.
23. The Edge Cafeteria, Michigan St. Univ, ¾" Engineered Panel - Clear, Mesher Shing McNutt Architects.
24. Angell Hall Reception, Univ. of Michigan, ¼" Engineered Panel - Clear.
25. Disney Interactive Media Group, Engineered Panel Custom Stain, JPC Architects.
26. and 27. Fond du lac Public Library, Engineered Panel - Chestnut, ISI Interior Systems.

28. McCain Foods HQ, ¾" Engineered Panel - Clear, Whitney Architects.
 29. Avalon Apts., stadium seating, ¾" Engineered Panel - Clear.
 30. Whole Foods Encinitas, ¾" Engineered Panel w/printing.
 31. DoMUS Apts., Claro Walnut Plank table & sled legs, HGA.
 32. The Whittaker Apts., Reclaimed Douglas Fir treads and landings, Portland Cladding - custom stain, Weber Thompson.
 33. Microsoft, reclaimed Douglas Fir Bar Height table and sled leg.
 34. Waystone Wine Bar, African Hardwood Blend Bar Top, Arcsine Architecture.
 35. AMLI Apts., Douglas Fir Back Bevel table w/sled leg, GGLO.
 36. Seattle Design Center, Claro Walnut Side Grain treads and landings, JPC Architects.
 37. Clover Pk. Community College, reclaimed Douglas Fir treads and Landings, McGranahan Architects.
 38. Univ. of Washington Nursing School, Western Maple Live Edge w/waterfall leg, McGranahan Architects.
 39. Microsoft Advanta, White Oak table w/custom metalwork, Salas O'Brien.
 40. Howard S. Wright, E. Maple Shuffleboard Table w/custom metalwork, Gensler.
 41. The Carter Apts., Coffee Table made of Douglas Fir and metal cubes, GGLO.
 42. Avanade Gym Floor Tables with white metal edge banding and bases, Gensler.
 43. Avanade Gym Floor Tables with white metal edge banding and bases, Gensler.
 44. Eddie V's Eastern Walnut Plank Stair Treads with cast iron safety nosing and LED lighting, DPA Architects
 45. Eddie V's Eastern Walnut Plank Stair Treads with cast iron safety nosing and LED lighting, DPA Architects
 46. The Carter Apts., Custom Bench, Red Alder, GGLO.
 47. Wyndham Vacations, White Telephone Pole Installation, JPC Architects.
 48. Specialties Café, Custom Stacked Wall, Cipollone Creative.
 49. Starbucks Seatac Main Terminal, Sculpted Engineered Plank.
 50. Univ of Washington, Bothell, Douglas Fir Benches, THA Architecture.
 51. Commercial Office Interiors, Western Maple Live Edge ceiling fins, COI design team.
 52. The Junction Apts., custom arc and hanging slats, GGLO.
 53. Port Angeles Waterfront Center, Western Maple fins for the auditorium, IMN Architects
 54. Port Angeles Waterfront Center, benches made with Alaskan Yellow Cedar Timbers, IMN Architects
- Back Cover: Tillamook Visitor's Center, Reclaimed Douglas Fir tables and benches, Olson Kundig. Photo: Carly Diaz.



windfall

CONTACT US

windfall.design

info@windfall.design

360-352-2250

