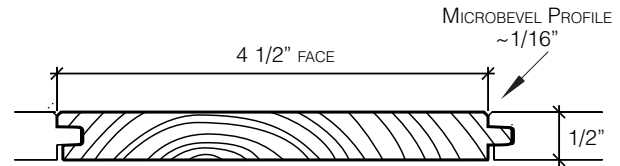


Color Cladding

Last Revised 2/21/2019 - A&D

PRODUCT DESCRIPTION

Color Cladding is a vibrant line of interior wall cladding made of Douglas fir and Hemlock reclaimed from solid and glue laminated beams and lumber. These are taken from deconstructed industrial, agricultural, and residential buildings in the Pacific Northwest. The Color Collection is designed to be used in solid colors or mix and match. The face is textured surface. Color Cladding has tongue and groove sides with beveled edges for easy installation.



SPECIFICATIONS

DIMENSIONS

- 1/2" thick x 4 1/2" wide x 2' to 8' random lengths

MATERIAL AND SURFACE

- Reclaimed Douglas fir and Hemlock
- Janka hardness scale 540 - 710
- Textured face
- Tongue and groove profile with beveled edges
- Standard reclaimed marks (nail holes, ferrous staining, glue lines, and occasional bolt holes) will be apparent
- Voids allowed up to 1/8" and are not filled

FINISHES, ADHESIVES AND FILLERS

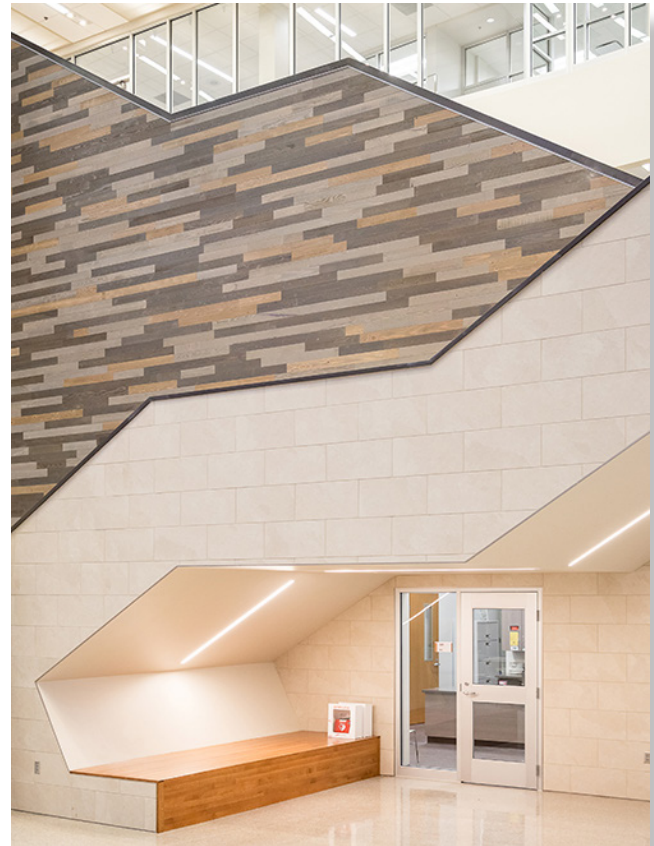
- Standard Top Coat/Sheen: Matte 106 WB Finish
- Clear/Top Coat VOC: 213 g/l
- Waterborn stains VOC: 23 g/l

WINDFALL FSC CHAIN OF CUSTODY

- SA-COC-002372-3

POTENTIAL LEED CREDITS

- Materials and Resources Credit 3: Materials Reuse
- Materials and Resources Credit 4: Recycled Content
- Materials and Resources Credit 5: Regional Materials (500 mi of Tumwater, WA)
- Materials and Resources Credit 7: Certified Wood
- Indoor Environmental Quality Credit 4.1: Low-emitting Materials-Adhesives
- Indoor Environmental Quality Credit 4.2: Low-emitting Materials-Paints and Coatings



Olathe High School, Washington. Steel, Evening, and Portland Cladding Textured in Clear finish



windfall



The mark of responsible forestry
FSC® C041262